









Install the Bluetooth headset

In order to use your Bluetooth headset, this one must be paired to the set. In order to manage the pairing, the Bluetooth headset must be in a detectable mode. Consult your Bluetooth headset documentation to activate the detectable mode.

Your Bluetooth equipment is ready to be paired

-  Menu | Access MENU
-  Select | Access to the messaging menu
-   | Select the tab: Connectivity
-  Search for devices | The set scans the available Bluetooth equipments
-  Select | Select the Bluetooth equipment to be paired
-  | Select the Bluetooth equipment to be paired
-  Ok | Enter the equipment PIN code

Bluetooth peripheral connected

Use the Bluetooth headset

Refer to the documentation of the Bluetooth headset before using it.

Regulatory statements

CE 0979

QDID: B012925
 FCCID: T7HRTX8050 / IC: 4979B-RTX8050
 Bluetooth is a registered trademark of Bluetooth SIG, Inc.

Exposure to Radio Frequency Signals

The Bluetooth module has been designed and manufactured not to exceed the SAR (Specific Absorption Rate) radio frequency power transmission limits established by the different countries concerned.

Privacy

Privacy of communications may not be ensured when using the Bluetooth handset or any additional Bluetooth device.

Disposal



The equipment must be returned to a collection point for electronic equipment waste disposal. Defective batteries must be returned to a collection point for chemical waste disposal.

Alcatel-Lucent, Lucent, Alcatel-Lucent and the Alcatel-Lucent logo are trademarks of Alcatel-Lucent. All other trademarks are the property of their respective owners. The information presented is subject to change without notice. Alcatel-Lucent assumes no responsibility for inaccuracies contained herein. Copyright © 2011 Alcatel-Lucent. All rights reserved

Quick Guide 500 DECT Handset Bluetooth Module



8AL90845USAAed01

8AL90845USAAed01 PN/600810ver1.1

Introduction

The Bluetooth headset Module replaces the cord between the handset and the headset. The Bluetooth headset gives the user more freedom to move around and reduced the risk of the headset cord getting stuck.

Before using a Bluetooth headset with your phone, you must install the Bluetooth module in your phone.

For more information, contact your installer or administrator.

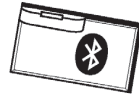


Please refer to the Alcatel-Lucent 500 DECT Handset manual if you want to have the information of this guide in other languages

Install the Bluetooth module

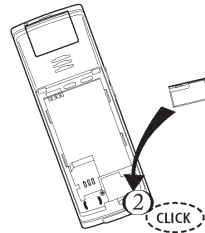


Turn off the phone before installing the module



You must be in possession of the Bluetooth module for your phone

- Turn off the handset
- Slip the lock to the unlocked position
- Lift the battery module



- Insert the Bluetooth module (You should hear a click when the module is in place)
- Installing the battery in the telephone
- Turn on the handset

Enable Bluetooth



Menu

Access MENU



Select

Access to the messaging menu



Select the tab: Connectivity



Bluetooth Select



Yes

Enable Bluetooth



To disable Bluetooth, follow the same procedure by selecting No



If the module is not installed, the Bluetooth menu is not accessible