

DATA SHEET

ARUBA CLEARPASS ONGUARD

Enterprise-class endpoint protection, posture assessments and health checks

ClearPass OnGuard agents perform advanced endpoint posture assessments, on leading computer operating systems to ensure compliance is met before devices connect.

Running on the Aruba ClearPass Policy Manager platform, the advanced network access control (NAC) framework in ClearPass OnGuard offers exceptional safeguards against vulnerabilities.

The following operating systems and versions are supported:

- Microsoft – Support for Windows 7 and above.
 - Can be run as a service.
- Apple – Support for Mac OS X 10.7 and above.
- Linux – Support for Red Hat Enterprise Linux 4 and above, Ubuntu 12.x LTS and 14.x LTS, Community Enterprise Operating System (CentOS) 4 and above, Fedora Core 5 and above, and SUSE Linux 10.x.

Supported agents:

	OnGuard Persistent Agent	OnGuard Dissolvable Agent	Microsoft's NAP Agent
Microsoft	X	X	X
Apple	X	X	
Linux	X*	X	

Note: Auto-remediation only supported by persistent agents
* Persistent agent supported on Ubuntu endpoints running 12.x LTS or 14.x LTS

THE CLEARPASS ADVANTAGE

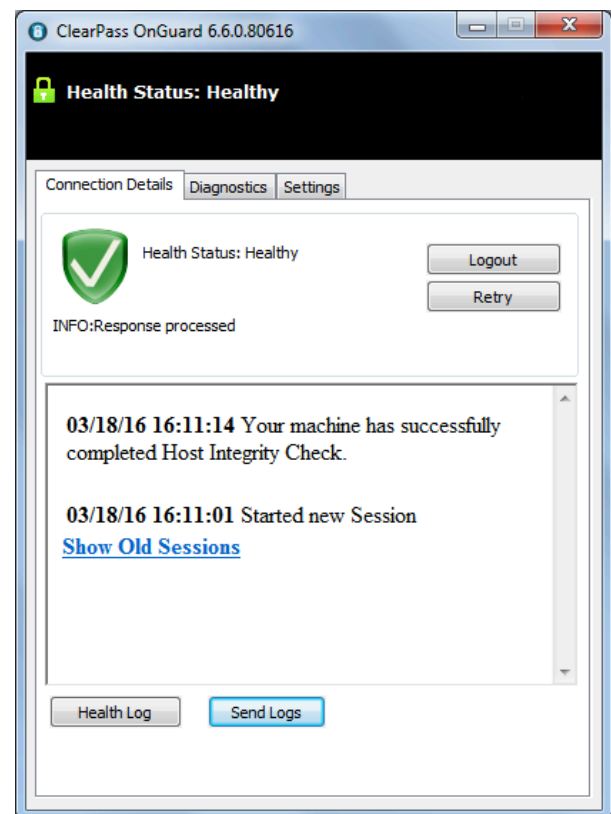
In addition to anti-virus, anti-spyware and personal firewall audits performed by traditional NAC products, OnGuard agents can perform additional posture and health checks, to ensure a greater level of endpoint compliance.

Persistent and dissolvable agents

The difference between the two is that the persistent agent provides nonstop monitoring and automatic remediation and control. When running persistent OnGuard agents, ClearPass Policy Manager can centrally send system-wide notifications and alerts, and allow or deny network access. The persistent agent also supports auto and manual remediation.

KEY FEATURES

- Enhanced capabilities for endpoint compliance and control
- Supports Microsoft, Apple, and Linux operating systems
- Anti-virus, anti-spyware, firewall checks and more
- Optional auto-remediation and quarantine capabilities
- System-wide endpoint messaging, notifications and session control
- Centrally view the online status of all devices from the ClearPass Policy Manager platform



Successful wireless authentication of a Windows 7 device.

Alternatively, the web-based dissolvable agent is ideal for personal, non IT-issued devices that connect via a captive portal and do not allow agents to be permanently installed. A one-time check at login ensures policy compliance. Devices not meeting compliance can be redirected to a captive portal for manual remediation.

Once the browser page used during authentication is closed, the dissolvable agent is removed leaving no trace.

Automatic remediation

If unhealthy endpoints do not meet compliance requirements, the user receives a message about the endpoint status and instructions on how to achieve compliance if auto-remediation is not used.

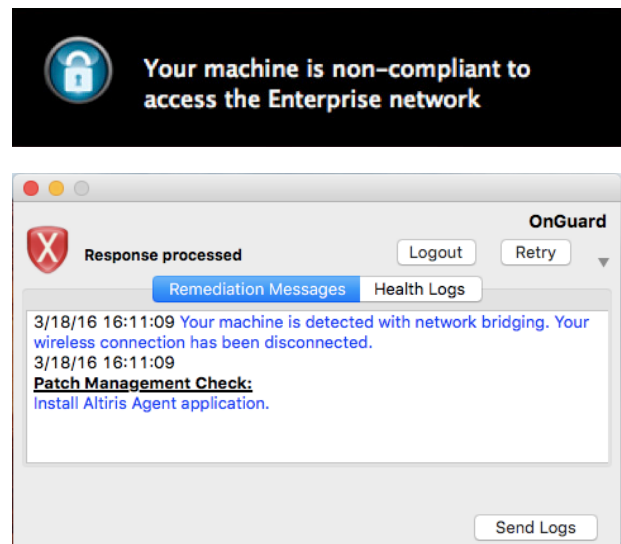
Messages can include reasons for remediation, links to helpful URLs and helpdesk contact information. ClearPass persistent agents provide the same message and remediation capabilities for 802.1X and combined environments.

IT-managed and BYOD endpoint compliance

OnGuard persistent and dissolvable agents can be used together in environments where endpoints are owned by the organization, employees and visitors. This ensures that all devices are assessed and granted proper privileges before accessing the network.

Complete endpoint visibility

To simplify troubleshooting, endpoint control and compliance reporting, ClearPass Policy Manager offers the ability to centrally managed health-check settings and policies. Views of ClearPass OnGuard activity, including user and device data show information about each device that connects using OnGuard agents.



Detailed Mac OS X quarantine messages.

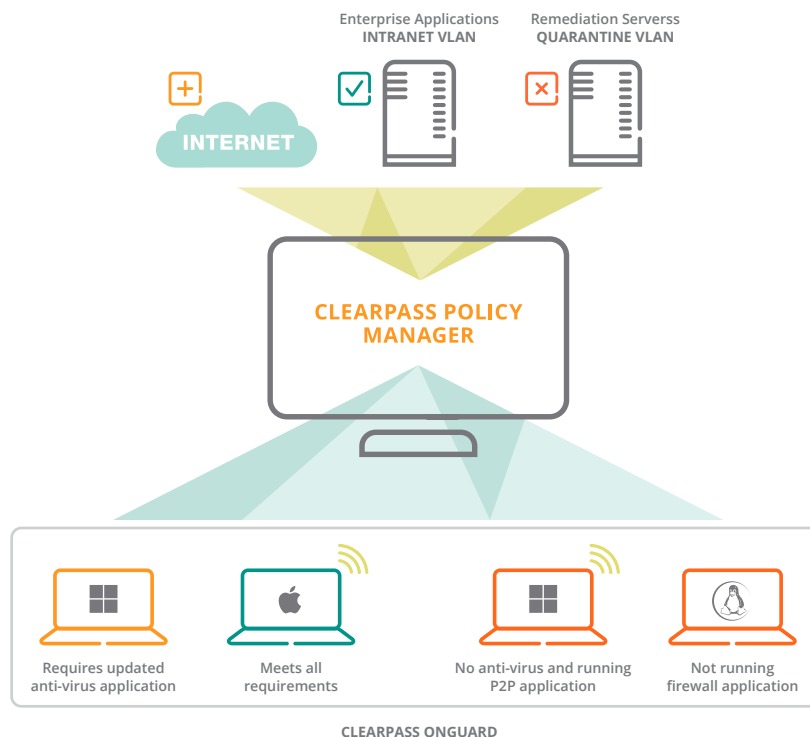


figure 1.0_032916_clearpassonguard-dsa

Persistent and dissolvable agents can be used for endpoint health checks.

Complete endpoint visibility

To simplify troubleshooting, endpoint control and compliance reporting, ClearPass Policy Manager offers the ability to centrally managed health-check settings and policies. Views of ClearPass OnGuard activity, including user and device data show information about each device that connects using OnGuard agents.

Real-time endpoint compliance

Depending on operating system type OnGuard performs the following level of posture and health checks.

	Windows	Mac OS X	Linux
Installed Applications	X	X	
AntiVirus	X	X	X
AntiSpyware	X	X	
Firewall	X	X	
Disk Encryption	X	X	
Network Connections	X	X	
Processes	X	X	
Patch Management	X	X	
Peer to Peer	X	X	
Services	X	X	X
Virtual Machines	X	X	
Windows Hotfixes	X		
USB Devices	X	X	
File Check	X	X	

* Chart represents ClearPass version 6.6 functionality.

** Disclaimer: Not all checks are supported across operating systems and agent type.

ORDERING GUIDANCE

ClearPass OnGuard can be ordered via dedicated OnGuard-only subscription that includes ArubaCare support or perpetual licenses.

Available enterprise options enable organizations to flexibly use the licenses for ClearPass OnGuard, Onboard or Guest.

Ordering ClearPass OnGuard involves the following three steps:

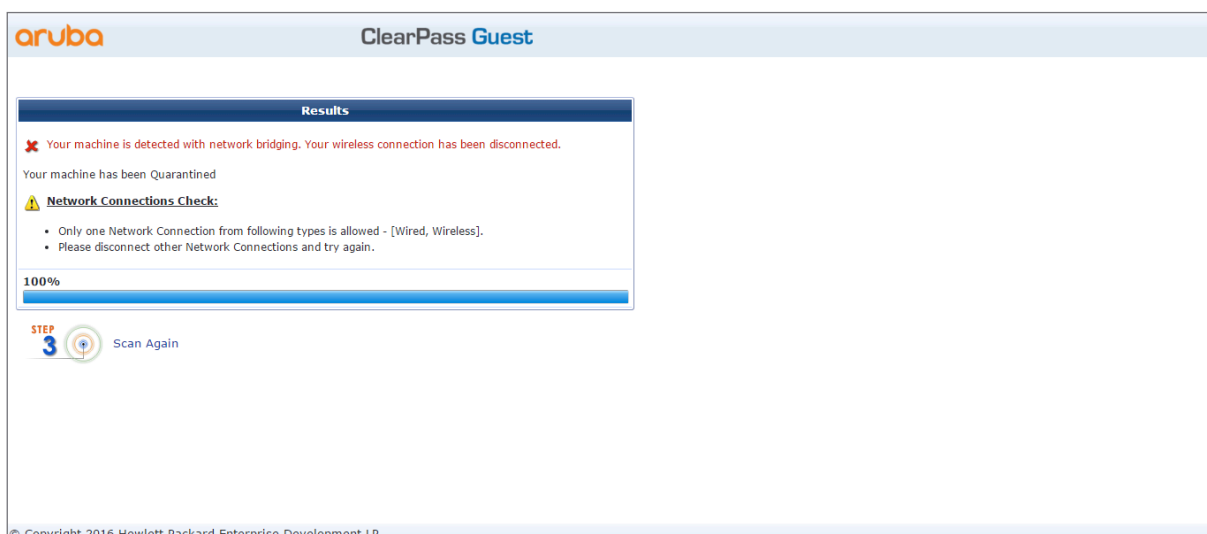
1. Determine the number of unique computer endpoints that will have posture/health checks performed prior to network access within your environment.
2. Choose the appropriate ClearPass Policy Manager hardware or virtual appliance to accommodate the total number from above. The Enterprise Starter Bundle that contains 25 licenses can be used.
3. Select the remaining capacity needed to accommodate the total number of endpoints using the OnGuard part numbers. Anything over the capacity of a base appliance will require the purchase of a second ClearPass Policy Manager appliance.

Example: To support the provisioning of 2,000 devices, make sure that ClearPass Policy Manager is sized to accommodate 2,000 endpoint devices.

Purchase the following:

- ClearPass Appliance – CP-HW-5K or CP-VA-5K
- ClearPass OnGuard – 2 X LIC-CP-OG-1K or for subscription, SUBX-CP-OG-1K

Additional ClearPass OnGuard capacity can be purchased at any time to meet growth demands. ClearPass OnGuard is licensed on a per client basis.



Centralized view of endpoints OnGuard activity.

ORDERING INFORMATION*

Part Number	Description
LIC-CP-OG-100	OnGuard license for Aruba ClearPass Policy Manager – 100 endpoints
LIC-CP-OG-500	OnGuard license for Aruba ClearPass Policy Manager – 500 endpoints
LIC-CP-OG-1K	OnGuard license for Aruba ClearPass Policy Manager – 1,000 endpoints
LIC-CP-OG-2500	OnGuard license for Aruba ClearPass Policy Manager – 2,500 endpoints
LIC-CP-OG-5K	OnGuard license for Aruba ClearPass Policy Manager – 5,000 endpoints
LIC-CP-OG-10K	OnGuard license for Aruba ClearPass Policy Manager – 10,000 endpoints
LIC-CP-OG-25K	OnGuard license for Aruba ClearPass Policy Manager – 25,000 endpoints
LIC-CP-OG-50K	OnGuard license for Aruba ClearPass Policy Manager – 50,000 endpoints
LIC-CP-OG-100K	OnGuard license for Aruba ClearPass Policy Manager – 100,000 endpoints
OnGuard Subscription Part Numbers	Description
SUB1-CP-OG-xxx*	1-year OnGuard subscription license for ClearPass Policy Manager (includes ArubaCare support)
SUB3-CP-OG-xxx*	3-year OnGuard subscription license for ClearPass Policy Manager (includes ArubaCare support)
SUB5-CP-OG-xxx*	5-year OnGuard subscription license for ClearPass Policy Manager (includes ArubaCare support)
Enterprise Perpetual Part Number	Description
LIC-CP-EN-xxx*	Enterprise license for ClearPass Policy Manager
Enterprise Subscription Part Numbers	Description
SUB1-CP-EN-xxx*	1-year enterprise subscription license for ClearPass Policy Manager (includes ArubaCare support)
SUB3-CP-EN-xxx*	3-year enterprise subscription license for ClearPass Policy Manager (includes ArubaCare support)
SUB5-CP-EN-xxx*	5-year enterprise subscription license for ClearPass Policy Manager (includes ArubaCare support)
Warranty	
Software	90 days**

* Subscription and enterprise licenses can be purchased in 1-, 3- or 5-year increments for 100, 500, 1,000, 2,500, 5,000, 10,000, 25,000, 50,000, and 100,000 endpoints

** Extended with support contract

Alcatel·Lucent 

enterprise.alcatel-lucent.com

Alcatel-Lucent Enterprise

32 avenue Kléber
92700 Colombes, France

Alcatel-Lucent Enterprise USA, Inc.

26801 West Agoura Rd.
Calabasas, CA 91301, USA

aruba

a Hewlett Packard
Enterprise company

www.arubanetworks.com

1344 CROSSMAN AVE | SUNNYVALE, CA 94089

1.844.473.2782 | T: 1.408.227.4500 | FAX: 1.408.227.4550 | INFO@ARUBANETWORKS.COM

DS_OnGuard_AL_060716